

Are You Covered?

Information Security and You and Your Business



Topics

The Potential Impact of Cybercrime on You and Your Business

People = The Weakest Link

Strong and Many Passwords Increase Security

What is Social Engineering and How Does it Work?

Who is Anonymous and Why Should You Care?

Protecting Your Personal Workspace

How to choose acceptable Uses of Electronic Resources - Enterprise-wide

Elements of a Successful Awareness Campaign

Topics

The Potential Impact of Cybercrime on You and Your Business

People = The Weakest Link

Strong and Many Passwords Increase Security

What is Social Engineering and How Does it Work?

Who is Anonymous and Why Should You Care?

Protecting Your Personal Workspace

How to choose acceptable Uses of Electronic Resources - Enterprise-wide

Elements of a Successful Awareness Campaign

Potential Impact of Cybercrime on You and Your Business

Does your firm have any well-known
or high-profile clients?



Anonymous' Stratfor hack outs intelligence
officials across the world

Published: 09 January, 2012, 22:53

Intelligence analysis firm Strategic Forecasting Inc (Stratfor) relaunched its website more than two weeks after an attack by hackers who had stolen data of clients including Henry Kissinger and former Vice President Dan Quayle.

Potential Impact of Cybercrime on You and Your Business



Sony PlayStation suffers massive data
breach

Does your firm take Credit Cards or have
other confidential financial information for
either its employees or clients?

Hackers may have stolen the personal information of 24.6 million Sony Online Entertainment users, the company said on Monday. More than 20,000 credit card and bank account numbers were also put at risk. This is in addition to the recent [leak of over 70 million accounts](#)

Potential Impact of Cybercrime on You and Your Business

**Attempt to spy on worker at Akron hospital
backfires; Man faces prison for e-mail infected with
spyware**

Published: Sunday, December 28, 2009, 10:56 AM

By Peter Krouse, The Plain Dealer



Is there even the slightest possibility that one of your employees is in a bad relationship or might have a family member or someone in their life who would become vindictive?

...a man sent an email with spyware to his ex-girlfriend, hoping to monitor what she did on her computer. Unfortunately for him (and the hospital), she opened the email on her work computer. Over the course of ten days, the spyware emailed the miscreant more than a thousand screenshots of confidential data on 62 patients.

Potential Impact of Cybercrime on You and Your Business

Security on  msnbc.com

T.J. Maxx data theft worse than
first reported

Data stolen covers transactions dating as far back as December 2003

How much would a compromise of your Firm's
Network cost the firm in money, time and,
the most important currency –
TRUST??

In February 2007, TJX, parent company of discount stores T.J. Maxx and Marshalls, disclosed that thieves had stolen information on possibly tens of millions of credit and debit cards. The incident wound up costing TJX millions of dollars paid to the FTC, credit card companies, banks, and consumers.

Topics

The Potential Impact of Cybercrime on You and Your Business

People = The Weakest Link

Strong and Many Passwords Increase Security

What is Social Engineering and How Does it Work?

Who is Anonymous and Why Should You Care?

Protecting Your Personal Workspace

How to choose acceptable Uses of Electronic Resources - Enterprise-wide

Elements of a Successful Awareness Campaign

People = The Weakest Link

- ➔ Lost laptops, smart phones, tablets
- ➔ Infected Documents and Machines
- ➔ Weak Passwords
- ➔ Duplicate Passwords
- ➔ Social Engineering

People = The Weakest Link

Do you have a set policy and specific steps for people to take if associates lose:

- ➔ A Firm-issued Laptop
- ➔ A Firm-issued Smart Phone
- ➔ A Personal Smart Phone
- ➔ A Firm-issued tablet
- ➔ How to deal with a potential malicious email

People = The Weakest Link

What is your Device use policy?

1. Are family members allowed to use firm-issued laptops?



People = The Weakest Link

What is your Device use policy?

2. Do you have a set policy for transporting documents such as encrypted USB drives?



Return me!

People = The Weakest Link

What is your Device use policy?

3. Do you supply laptop privacy screens for frequent travelers?



"You spelled 'confidential' wrong."

Topics

The Potential Impact of Cybercrime on You and Your Business

People = The Weakest Link

Strong and Many Passwords Increase Security

What is Social Engineering and How Does it Work?

Who is Anonymous and Why Should You Care?

Protecting Your Personal Workspace

How to choose acceptable Uses of Electronic Resources - Enterprise-wide

Elements of a Successful Awareness Campaign

Strong and Many Passwords Increase Security

Think about your own life:

- ➔ Do you have the same password for your Facebook account as you do for your Work account?
- ➔ What about for your Gmail or Yahoo account?
- ➔ And is that the same password for your Bank Account?

Strong and Many Passwords Increase Security

Maybe you are diligent about having several passwords, but are you sure all of your firm's employees are?

REMEMBER:

The sites most targeted by Hackers are Facebook, Gmail, Twitter and other online Social Media.

Strong and Many Passwords Increase Security

 Longer is better

 Lowercase and uppercase letters

 Numbers

 Symbols

 PassPhrase is best.

Strong and Many Passwords Increase Security

Dorothy

vs.

TheYellowBrickRoad

TheYellowBrickRoad

vs.

T3eYe!!0wBrickR0ad

What are your firm's password standards?

Topics

The Potential Impact of Cybercrime on You and Your Business

People = The Weakest Link

Strong and Many Passwords Increase Security

What is Social Engineering and How Does it Work?

Who is Anonymous and Why Should You Care?

Protecting Your Personal Workspace

How to choose acceptable Uses of Electronic Resources - Enterprise-wide

Elements of a Successful Awareness Campaign

What is Social Engineering and How Does it Work

Cyber Criminals at heart “Con Men” and like
Con Men they prey on people’s emotions.

Specifically Cyber Criminals prey on your sense of:

- ➔ **Curiosity**
- ➔ **Logic**
- ➔ **Raw Emotion**
- ➔ **Authority**

What is Social Engineering and How Does it Work

The Assistant

Geena

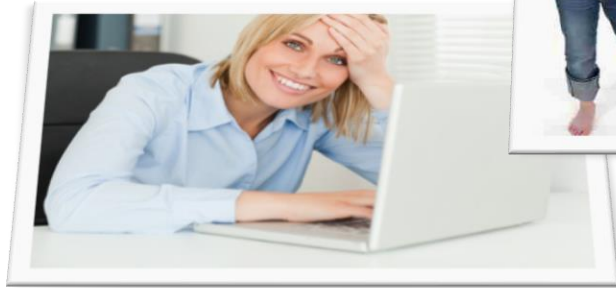


I received a phone call from the Managing Partner's assistant. Apparently some accounts were hacked and the Managing Partner's office was in charge of working with IT to warn people about the situation. She needed my username and password to make sure that my account wasn't one of them, because there were no full names associated with the data. Well, I figured, if the Managing Partner's office was calling, I wanted to do anything I could to help. So I provided them with my username and password.

The next day, the Helpdesk sent out an email about several employees receiving a similar call. I had to quickly change the password for all of my personal accounts because it was the same as my firm account. Cyber Thieves really played on my sense of **AUTHORITY** and it was an important lesson for me to never, ever give out my password to ANYONE!

What is Social Engineering and How Does it Work

Hillary & Josie



The Paralegal

My 11 year old daughter is CRAZY about Justin Beiber. She will download any song, read any article and go to any website that has information on him. She plays his songs so much that even I know all of the words. One weekend I made the mistake of not hitting ctrl/alt/del/enter on my work laptop before I ran out to the grocery store. While I was gone, she got on the computer and went to some website that had “Secret Justin Information.” The next night when I sat down to do work, my computer wouldn’t start. Apparently the site was malicious and she downloaded some – SOMETHING - I don’t know what.

The next day, I had to sheepishly take my laptop to the Help Desk to be fixed. Those Cyber thieves definitely played on her sense of **CURIOSITY** and I am determined that I will never forget to hit ctrl/alt/del/enter again!

What is Social Engineering and How Does it Work

Todd



The Partner

The other day I received an email from Stan saying that I hadn't completed some necessary Bar Association Training. I swore I had taken the training, but Stan is the Partner who keeps track of these things and I've been so busy with my current trial I figured I probably missed something. Attached to the email was a spreadsheet which listed the names of those people who still needed to complete the course. I clicked on it, but when I opened it, it was blank. Over the next few days my computer started slowing down and acting weird and then the Help Desk came and had to confiscate my laptop – just before I was heading to the Courthouse for TRIAL! Turns out, when I clicked on that attachment I silently downloaded and installed some malware that got onto the network and started searching for confidential data.

That email made SO much sense. Boy oh boy did these Cyber Thieves ever play on my sense of **LOGIC** and I fell for it hook, line and sinker...

What is Social Engineering and How Does it Work

Sande



The Associate

My buddy Hank sent me an email saying that he was collecting money for a little girl in his neighborhood who was stricken with some awful kidney disease and her family had no insurance. Now, Hank isn't the sentimental type. So I thought, well if Hank is asking to help out – it must be a worthy cause, so I sent off a check for 100 bucks to the address in the email.

The next week I saw Hank at our basketball league game, and I asked him about the email. He said, "What email?" I guess I should have called Hank before I sent the check. These cyber thieves totally played on my sense of **RAW EMOTION** and I'm out 100 bucks!

What is Social Engineering and How Does it Work

Two major types:



Pretexting



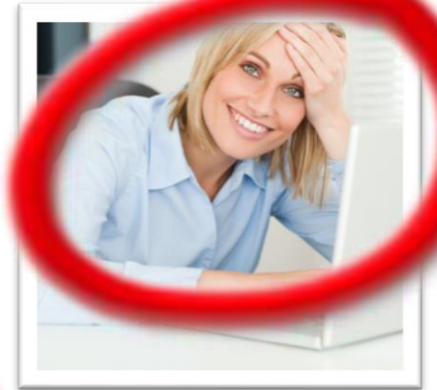
Phishing

What is Social Engineering and How Does it Work



Geena

Here is how
Malware works...



Hillary



Sandee



Todd

What is Social Engineering and How Does it Work



Topics

The Potential Impact of Cybercrime on You and Your Business

People = The Weakest Link

Strong and Many Passwords Increase Security

What is Social Engineering and How Does it Work?

Who is Anonymous and Why Should You Care?

Protecting Your Personal Workspace

How to choose acceptable Uses of Electronic Resources - Enterprise-wide

Elements of a Successful Awareness Campaign

Who is Anonymous and Why Should You Care?



Topics

The Potential Impact of Cybercrime on You and Your Business

People = The Weakest Link

Strong and Many Passwords Increase Security

What is Social Engineering and How Does it Work?

Who is Anonymous and Why Should You Care?

Protecting Your Personal Workspace

How to choose acceptable Uses of Electronic Resources - Enterprise-wide

Elements of a Successful Awareness Campaign

Protecting Your Personal Workspace

ALWAYS...



Leave your desk clean when you go home at night.

Did you know? Windows key + L also works?

Is this the standard policy at your firm??

Topics

The Potential Impact of Cybercrime on You and Your Business

People = The Weakest Link

Strong and Many Passwords Increase Security

What is Social Engineering and How Does it Work?

Who is Anonymous and Why Should You Care?

Protecting Your Personal Workspace

How to choose acceptable Uses of Electronic Resources - Enterprise-wide

Elements of a Successful Awareness Campaign

How to choose acceptable Uses of Electronic Resources - Enterprise-wide

- **The best “lock-down” would include:**
 - ➔ **No access to personal email, Facebook, Twitter, Linked-In or other social sites**
 - ➔ **Lock down on “questionable” sites which may unleash malicious software.**
 - ➔ **Badge security – Everyone including visitors have badges to get in the door with their name and photo ID**
 - ➔ **Two-factor remote access**

How to choose acceptable Uses of Electronic Resources - Enterprise-wide

- ➔ No personal email sent or received from Firm account.
- ➔ No work-product sent to and from personal email accounts.
- ➔ Electronic method to wipe mobile devices such as cell phones and tablets remotely in case of loss, theft or employee separation.
- ➔ Reminding associates about travel and remote work precautions.
- ➔ No upload of work-product to online FTP sites like DropBox or You SendIt.

Topics

The Potential Impact of Cybercrime on You and Your Business

People = The Weakest Link

Strong and Many Passwords Increase Security

What is Social Engineering and How Does it Work?

Who is Anonymous and Why Should You Care?

Protecting Your Personal Workspace

How to choose acceptable Uses of Electronic Resources - Enterprise-wide

Elements of a Successful Awareness Campaign

Elements of a Successful Awareness Campaign

Assessment



IT Needs

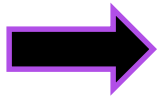
- “Pen” Test/Ethical Hacking
 - Security Audit
-



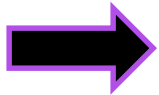
Training and Awareness Needs

- www.surveymonkey.com
- Interviews with a cross-section of the firm to assess what they know.

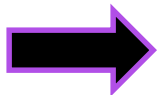
Elements of a Successful Awareness Campaign



TRAINING strives to produce relevant and needed security skills and competencies.



SECURITY AWARENESS EFFORTS are designed to change behavior or reinforce good security practices.



Information Security is **EVERYONE'S** job.

Elements of a Successful Awareness Campaign

Develop IT security policy that reflects business needs

**Remind Them, Remind Them,
Remind Them, Remind Them..**

Train them to have good habits and then...

Resources



SANS – securingthehuman.org



Start or join a local Security Awareness Group (Legal or otherwise)

Questions

